

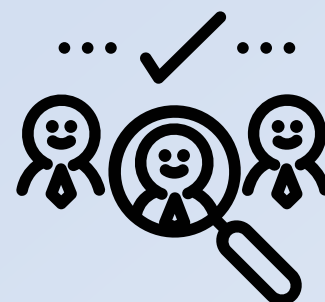
# COVID-19 CORONAVIRUS

## What is contact tracing?

March 2020

### What is COVID-19?

COVID-19 is a new illness that can affect your lungs and airways. It's caused by a virus called coronavirus.



### Where did the cases in New Zealand come from?

Most cases of COVID-19 in New Zealand have come from overseas. Once a case has been identified, the Ministry of Health and DHBs track down people who may have been exposed to the virus through a process called contact tracing.

### What is contact tracing?

Health services use contact tracing to find people who may have been exposed to an infectious disease. There are two types of 'contacts' – close contacts and casual contacts. Health services give advice to both of these contact types on what they need to do.

### What is a close contact?

A close contact is anyone who has been close to someone with COVID-19. This can mean living in the same house or spending more than 15 minutes close to someone with COVID-19 such as on a flight, bus or train or in your workplace.

### What is a casual contact?

A casual contact is someone who has had contact with a case but doesn't meet the criteria for a close contact. This could mean someone travelling on the same aeroplane who was seated away from the case. For example, they were only close to the person with COVID-19 for less than 15 minutes or were at the same place but not near them.

If you think you might be a close or casual contact, it doesn't mean you have COVID-19. You will be contacted by public health staff or you can call Healthline on 0800 358 5453. They will give you advice on what you need to do.

**Call Healthline 24/7 on 0800 358 5453 if you need to speak to someone.**

**Visit [www.govt.nz/covid-19-novel-coronavirus](http://www.govt.nz/covid-19-novel-coronavirus) for more information.**